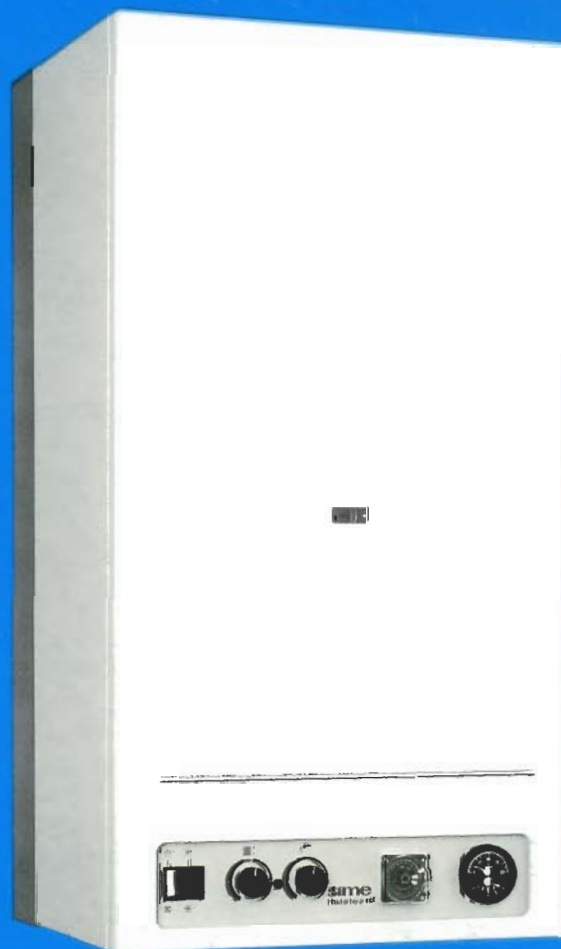


**sime**  
**HALSTEAD**

*Trio*

WALL MOUNTED FAN ASSISTED COMBINATION GAS BOILER

G.C. NO. 47 283 01



OPERATING INSTRUCTIONS FOR THE USER

# SIME HALSTEAD COMBI 30/90

## OPERATING INSTRUCTIONS FOR THE USER

### GAS SAFETY (INSTALLATION AND USE) REGULATIONS 1984.

It is the law that all gas appliances are installed by a competent person, in accordance with the above regulations. Failure to install appliances correctly could lead to prosecution. It is in your own interest, and that of safety, to ensure that the law is complied with.

**WARNING.** It is essential that the appliance is correctly earthed. An electricity supply of 240V 50 Hz is required fused at 3 Amp.

Read these instructions carefully before attempting to operate the appliance.

## 1 INTRODUCTION

The Sime Halstead Combi is a fully automatic, wall mounted, fan assisted balanced flue combination boiler.

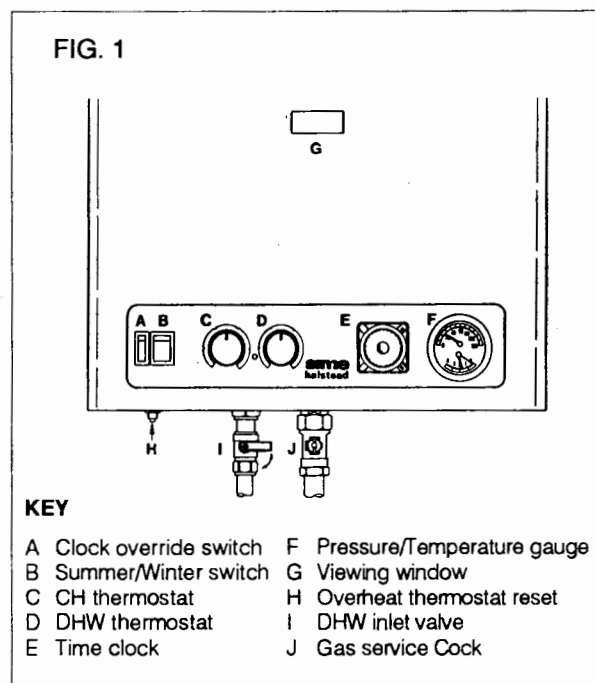
When operating in winter mode, the appliance provides central heating as required and produces instantaneous hot water upon demand up to a maximum output of 26.4 kW (90,000 Btu/h). When operating in summer mode, the central heating is not operational however the appliance continues to supply hot water whenever it is required.

The heat output is automatically controlled by the fully modulating gas valve (within its pre-set limits), and there are user adjustable thermostats to control the temperature of both central heating and domestic hot water.

A temperature / pressure gauge is fitted, and an overheat thermostat is incorporated to protect against fault conditions.

## 2 APPLIANCE FUNCTION

A demand for hot water will be sensed by the appliance detecting water flow (providing that the flow rate is above 2.8 l/m (0.62 galls/min).



The fan will start and the pilot will light, immediately followed by the main burner at full output.

If the draw off rate is near the maximum design flow rate the appliance will run continuously at full output until a tap is either turned off or the flow rate is reduced in which case the heat output will reduce accordingly to maintain a steady temperature.

Hot water is made available almost immediately at the appliance outlet, but the final temperature and time taken for the hot water to reach a tap depends upon the thermostat setting, the rate at which water is drawn off, and the length of the pipe between the boiler and the tap.

When the tap is turned off, the appliance will revert to CH mode (if set on winter position) otherwise the burner and pilot will be extinguished pending the next demand for hot water.

## 3 OPERATING INSTRUCTIONS

TO LIGHT THE APPLIANCE :- (Fig 1)

- 3.1) Check that the electricity supply is off and that the DHW isolation valve (I) is in the open position (lever vertical.) Check that the gas supply is on.
- 3.2) Turn the Summer/Winter switch (B) to Summer (Water only) position. (☀)

- 3.3) Switch on the electricity supply and fully open any DHW tap. The burner will light. Check that the burner has lit by looking through the viewing window 'G'. If the burner fails to light, press the overheat thermostat reset button (H) once and the burner should now light. Turn off the tap.
- 3.4) Check that the room thermostat (if fitted) is calling for heat and turn the clock override switch (A) to the on position '☒'. Turn the heating thermostat (C) to maximum (fully clockwise).
- 3.5) Turn the Summer/Winter switch to the Winter position (☛) and the burner will light to serve the heating load.
- 3.6) Turn the clock override switch to the clock position '☉' and set the clock (as described in section 6.4) to the required settings. Set the Summer/Winter switch (and the room thermostat if fitted), to the desired position and set the required temperature for the CH and DHW by rotating the thermostats (C & D) clockwise to increase or anticlockwise to decrease the temperature.

**NOTE** that when operating in Winter mode, priority is automatically given to providing hot water when the demand arises.

TO TURN THE APPLIANCE OFF :

#### For Short Periods

Set the Summer /Winter switch (B) to Summer position (☛), and isolate the DHW inlet valve (I) by rotating the lever into the horizontal position. When required - restore the switch to the Winter position (☛) and turn on the DHW isolation valve.

#### For Longer Periods

Follow the same procedure as for short periods and in addition, isolate the mains electricity supply unless a frost thermostat is fitted.

**WARNING:** If no frost protection is provided and frost is likely during a short absence from home, leave the heating controls (if fitted) at a reduced temperature setting.

For longer periods, the entire system should be drained, including the domestic water system. If the system incorporates a frost thermostat, then, during cold weather, the appliance should

be turned off at the time clock only. This is achieved by rotating the timer until the appliance is switched off by one of the tabs, then removing all of the tabs. The mains electrical supply should be left on with the S/W switch remaining in the W position.

## 4 MINIMUM CLEARANCES

The following MINIMUM CLEARANCES must be available for servicing the appliance:

Above the appliance casing	200mm (8 in)
At the R.H.S	90mm (3 1/2 in)
At the L.H.S	5mm (1/4 in)
Below the appliance casing	200mm (8 in)
In front of the appliance.	450mm (18 in)

## 5 ROUTINE SERVICING

To ensure continued efficient operation of the appliance, it is recommended that it is checked and serviced as necessary at regular intervals. The frequency of servicing will depend upon the particular installation conditions and usage but in general once a year should be adequate. It is the law that any service work must be carried out by a competent person such as British Gas or other CORGI registered personnel.

## 6 GENERAL INFORMATION

### 6.1 APPLIANCE OVERHEAT THERMOSTAT

The appliance is fitted with a safety cut out thermostat. In the event of overheating this will interrupt the power supply and prevent the appliance from functioning. If this occurs, allow the appliance to cool and press the overheat thermostat reset button (H) once and light the boiler as described in section 3 above.

If the cut-out condition is repeated, turn off the electrical supply and consult your installer or service engineer.

## 6.2 PRESSURE / TEMPERATURE GAUGE

The gauge (F) on the fascia panel indicates the approximate system temperature and pressure. If the normal running pressure is seen to decrease over a period of time there is a water leak and you should consult your installer or service engineer.

## 6.3 ELECTRICAL SUPPLY

The mains plug used must be a 3 pin type to BS 1363, and fused at 3A. THIS APPLIANCE MUST BE EARTHED.

**NOTE** *An interruption in the electricity supply whilst the burner is alight may cause the overheat thermostat to operate. If this is suspected, depress the reset button (H) once.*

To connect a plug:

As the colour of wires in the mains lead of this appliance may not correspond with the coloured markings identifying the terminals in your plug, proceed as follows:

The wire which is coloured green and yellow must be connected to the terminal in the plug which is marked with the letter E or by the earth symbol - or coloured green and yellow.

The wire which is coloured blue must be connected to the terminal marked with the letter N or coloured black.

The wire which is coloured brown must be connected to the terminal marked with the letter L or coloured red.

## 6.4 SETTING THE HEATING PROGRAMMER

To set the heating programmer proceed as follows:

- Remove the plastic cover from the front of the clock by rotating clockwise  $\frac{1}{8}$  of a turn and pulling forwards.
- 6 tabs are supplied, 3 green to turn the heating on, and 3 red to turn the heating off. Push them into the clock dial at the times corresponding to when the heating is desired on and off. Spaces are available near the centre of the clock to store spare tabs if three time periods are not required.
- Set the clock to the correct time by rotating the dial clockwise until the arrow at the top RHS corresponds to the current time.
- If a frost thermostat is fitted see section 3.

## 6.5 VENTILATION

If the appliance is installed in a compartment it MUST NOT be used for storage purposes.

Any ventilation provided for the appliance during installation MUST NOT be blocked and a periodic check must be made to ensure that the vents are free from obstructions.

## 6.6 CLEANING

Use only a damp cloth and mild detergent to clean the appliance outer casing. DO NOT use abrasive cleaners.

## 7 SAFETY

It is essential that the instructions in this booklet are strictly followed for the safe and economical operation of this appliance.

The appliance functions as a fan assisted balanced flue unit. The flue terminal MUST NOT BE OBSTRUCTED under any circumstances. If damaged, turn off the appliance and consult the installer, service engineer, or local Gas Region.

If it is known or suspected that a fault exists on the appliance it MUST NOT be used until the fault has been rectified by a competent person.

### WARNING

IF A GAS LEAK IS SUSPECTED OR EXISTS, TURN OFF THE GAS SUPPLY TO THE APPLIANCE AT THE GAS SERVICE COCK. DO NOT OPERATE ANY ELECTRICAL SWITCHES. DO NOT OPERATE ANY ELECTRICAL APPLIANCE. OPEN ALL WINDOWS AND DOORS. DO NOT SMOKE. EXTINGUISH ALL NAKED LIGHTS. CONTACT THE LOCAL GAS REGION IMMEDIATELY.

---

**HALSTEAD BOILERS Ltd**

**4 FIRST AVENUE, BLUEBRIDGE IND. ESTATE,  
HALSTEAD, ESSEX CO9 2EX**

**TEL. 0787-475557, FAX 0787-474588**